

Model-J P1c  
(G082)  
PARTS CATALOG

First edition, April 2002

Ricoh Company, LTD.

**Model-J P1c (G082)**

**PARTS CATALOG**

This catalog gives the numbers and names of parts on this machine.

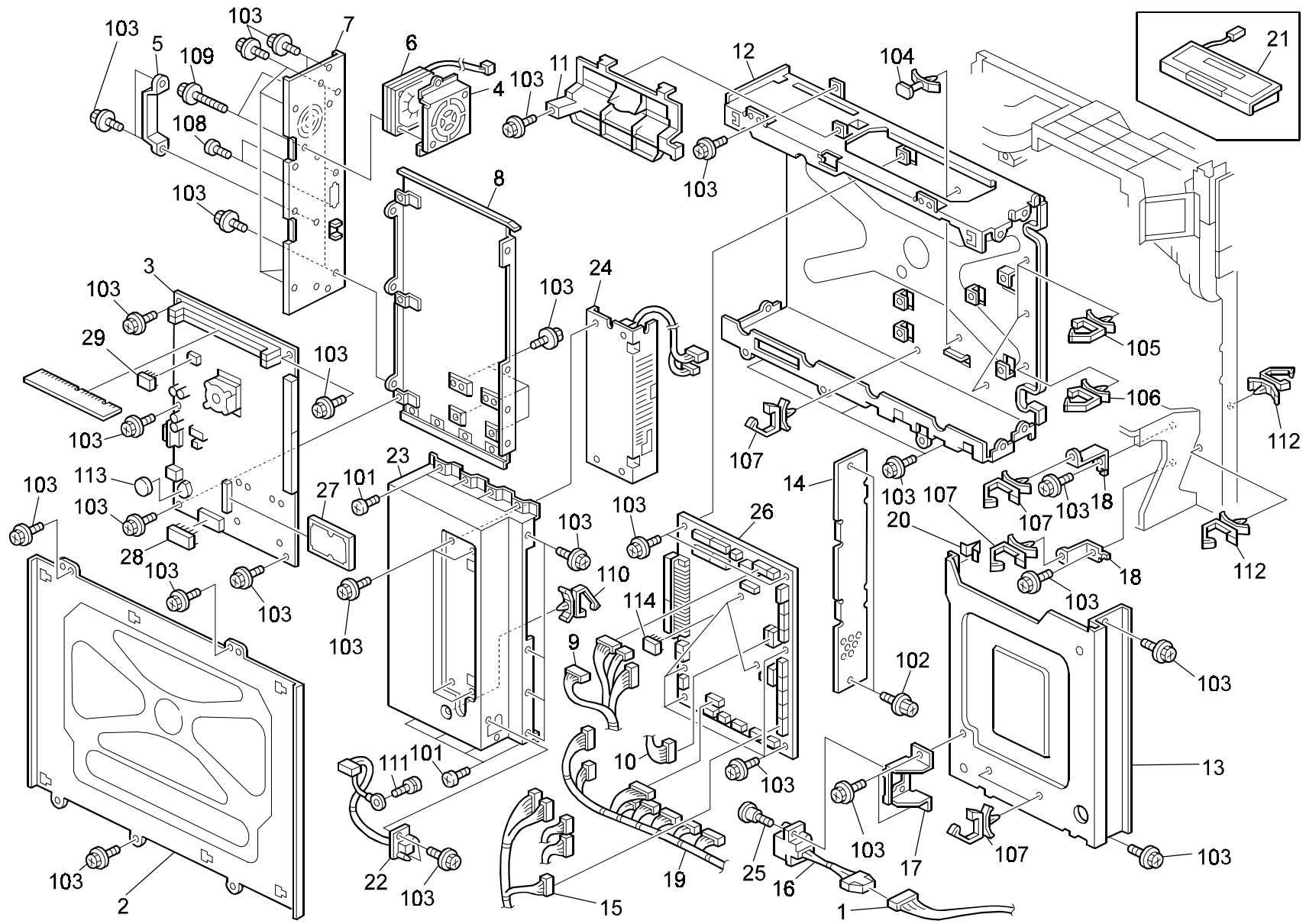
**CONTENTS**

|                                    |          |
|------------------------------------|----------|
| 1.Electrical Section 2 (G082)..... | 2        |
| 2.Decals And Documents (G082)..... | 4        |
| <b>Parts Index .....</b>           | <b>7</b> |

Note: Refer to the G060 parts catalog for printer engine components.

**April ,26 ' 2002**

# 1.Electrical Section 2 (G082)

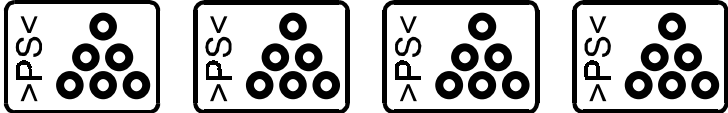


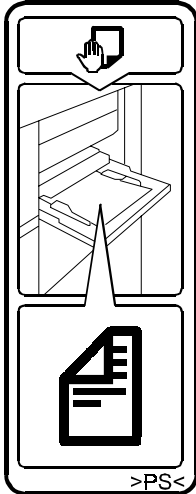

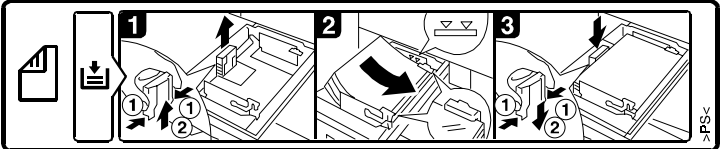
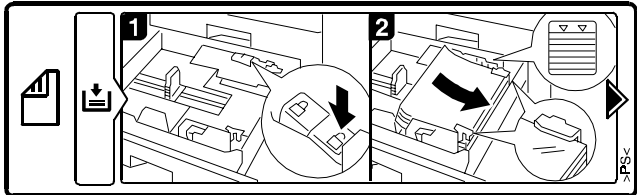


## 1. Electrical Section 2 (G082)

| Index No. | Part No.  | Description                    | Q'ty Per Assembly |
|-----------|-----------|--------------------------------|-------------------|
| 1         | G082 5552 | Harness - AC1                  | 1                 |
| 2         | G060 5847 | Rack - Inner Back Application  | 1                 |
| 3         | G082 5730 | Controller Board               | 1                 |
| 4         | G082 5853 | Bracket - Fan                  | 1                 |
| 5         | G060 5853 | Grip - Application             | 1                 |
| 6         | AX64 0139 | Cooling Fan - Controller       | 1                 |
| 7         | G082 5852 | Panel - Controller Board       | 1                 |
| 8         | G082 5856 | Tray - Controller Board        | 1                 |
| 9         | G077 5454 | Harness - PSU                  | 1                 |
| 10        | G077 5500 | Harness - Dev Motor K          | 1                 |
| 11        | G077 1194 | Cover - Fan Duct               | 1                 |
| 12        | G077 5841 | Application Rack Assy          | 1                 |
| 13        | G082 5848 | Bracket - Harness              | 1                 |
| 14        | G060 5849 | Left Rear Cover                | 1                 |
| 15        | G077 5451 | Harness - Middle Main          | 1                 |
| 16        | G082 5553 | Harness - AC2                  | 1                 |
| 17        | G082 5849 | Bracket - PSU Drawer           | 1                 |
| 18        | G060 5870 | Clamp - M4.8                   | 2                 |
| 19        | G077 5450 | Harness - Lower Main           | 1                 |
| 20        | G060 5829 | Upper Spring Plate - Rack      | 1                 |
| 21        | G082 7011 | Operation Panel - NA           | 1                 |
| 21        | G082 7111 | Operation Panel - EU           | 1                 |
| 22        | G082 5741 | Harness - PSU                  | 1                 |
| 23        | G082 5859 | Cover - Controller Board       | 1                 |
| 24        | G082 5750 | Power Supply Unit - Controller | 1                 |
| 25        | AA14 3301 | Stepped Screw - M3x4           | 1                 |
| 26        | G082 5071 | BCU Board                      | 1                 |
| 27        | G690 7000 | HDD - MK1016GAP                | 1                 |
| 28        | G082 5766 | IC - BIOS PROM                 | 1                 |
| 29        | G082 5764 | IC - NVRAM                     | 1                 |

| Index No. | Part No.   | Description                      | Q'ty Per Assembly |
|-----------|------------|----------------------------------|-------------------|
| 101       | 0353 0040B | Screw - M3X4                     |                   |
| 102       | 0802 5276  | Tapping Screw With Washer - M3x6 |                   |
| 103       | 0451 3006B | Tapping Screw - M3x6             |                   |
| 104       | 1105 0367  | Spacer                           |                   |
| 105       | 1105 0489  | Harness Clamp - LWS 1316         |                   |
| 106       | 1105 0490  | Harness Clamp - IWS-2218         |                   |
| 107       | 1105 0487  | Harness Clamp                    |                   |
| 108       | 0352 5060B | Screw:m2.5x6                     |                   |
| 109       | 0451 3020B | Tapping Screw - 3x20             |                   |
| 110       | 1105 0511  | Harness Clamp - LWS-0306ZC       |                   |
| 111       | 0801 0149  | Philips Pan Head Screw - M4x6    |                   |
| 112       | 1105 0488  | Harness Clamp                    |                   |
| 113       | 1206 0085  | Lithium Cell - CR2032            |                   |
| 114       | 1407 5751  | IC - NVRAM I2C BUS 64K DIP       |                   |

## 2.Decals And Documents (G082)

|  |  |  |
|--|--|--|
| <p>1</p>   | <p>3</p>  <p>4</p>     | <p>5</p>  |
| <p>2</p>  | <p>6</p>  <p>7</p>  |  |

## 2.Decals And Documents (G082)

|           |           |           |           |
|-----------|-----------|-----------|-----------|
| <p>8</p>  | <p>10</p> | <p>11</p> |           |
| <p>9</p>  | <p>12</p> | <p>13</p> | <p>15</p> |
| <p>14</p> | <p>16</p> |           |           |

## 2.Decals And Documents (G082)

| Index No. | Part No.  | Description                        | Q'ty Per Assembly |
|-----------|-----------|------------------------------------|-------------------|
| 1         | GA00 3030 | Decal - Shielding Plate Y          | 1                 |
| 1         | GA00 3031 | Decal - Shielding Plate M          | 1                 |
| 1         | GA00 3032 | Decal - Shielding Plate C          | 1                 |
| 1         | GA00 3033 | Decal - Shielding Plate K          | 1                 |
| 2         | G082 7005 | Decal - Emblem (RIC)               | 1                 |
| 2         | G082 7505 | Decal - Emblem (SVN)               | 1                 |
| 2         | G082 7506 | Decal - Emblem (GES)               | 1                 |
| 3         | GA00 1003 | Decal - Grip B1                    | 1                 |
| 4         | GA00 1004 | Decal - Grip B2                    | 1                 |
| 5         | GA00 3010 | Decal - Manual Feed                | 1                 |
| 6         | GA00 3011 | Decal - Paper Tray 1               | 1                 |
| 7         | GA00 3012 | Decal - Paper Tray 2 Left          | 1                 |
| 8         | GA00 3013 | Decal - Paper Tray 2 Right         | 1                 |
| 9         | GA00 3014 | Decal - Paper Tray                 | 1                 |
| 10        | GA00 3016 | Decal - Y Toner Supply             | 1                 |
| 10        | GA00 3017 | Decal - M Toner Supply             | 1                 |
| 10        | GA00 3018 | Decal - C Toner Supply             | 1                 |
| 10        | GA00 3019 | Decal - K Toner Supply             | 1                 |
| 11        | GA00 3025 | Decal - Drum Stay                  | 1                 |
| 12        | GA00 3029 | Decal - Vertical Transport         | 1                 |
| 13        | GA00 3035 | Energy Decal                       | 1                 |
| 14        | GA00 0027 | Decal - Inkjet Paper/Paper Caution | 1                 |
| 15        | GA00 3037 | Decal - Power Source               | 1                 |
| 16        | GA00 3047 | Decal - Fiery                      | 1                 |

| Index No. | Part No. | Description | Q'ty Per Assembly |
|-----------|----------|-------------|-------------------|
|           |          |             |                   |

# Parts Index



## Parts Index

| Part No.  | Description                    | Page and Index No. |
|-----------|--------------------------------|--------------------|
| G082 5071 | BCU Board                      | 3- 26              |
| G082 5552 | Harness - AC1                  | 3- 1               |
| G082 5553 | Harness - AC2                  | 3- 16              |
| G082 5730 | Controller Board               | 3- 3               |
| G082 5741 | Harness - PSU                  | 3- 22              |
| G082 5750 | Power Supply Unit - Controller | 3- 24              |
| G082 5764 | IC - NVRAM                     | 3- 29              |
| G082 5766 | IC - BIOS PROM                 | 3- 28              |
| G082 5848 | Bracket - Harness              | 3- 13              |
| G082 5849 | Bracket - PSU Drawer           | 3- 17              |
| G082 5852 | Panel - Controller Board       | 3- 7               |
| G082 5853 | Bracket - Fan                  | 3- 4               |
| G082 5856 | Tray - Controller Board        | 3- 8               |
| G082 5859 | Cover - Controller Board       | 3- 23              |
| G082 7005 | Decal - Emblem (RIC)           | 5- 2               |
| G082 7011 | Operation Panel - NA           | 3- 21              |
| G082 7111 | Operation Panel - EU           | 3- 21              |
| G082 7505 | Decal - Emblem (SVN)           | 5- 2               |
| G082 7506 | Decal - Emblem (GES)           | 5- 2               |

| Part No.  | Description                   | Page and Index No. |
|-----------|-------------------------------|--------------------|
| G060 5829 | Upper Spring Plate - Rack     | 3- 20              |
| G060 5847 | Rack - Inner Back Application | 3- 2               |
| G060 5849 | Left Rear Cover               | 3- 14              |
| G060 5853 | Grip - Application            | 3- 5               |
| G060 5870 | Clamp - M4.8                  | 3- 18              |
| G077 1194 | Cover - Fan Duct              | 3- 11              |
| G077 5450 | Harness - Lower Main          | 3- 19              |
| G077 5451 | Harness - Middle Main         | 3- 15              |
| G077 5454 | Harness - PSU                 | 3- 9               |
| G077 5500 | Harness - Dev Motor K         | 3- 10              |
| G077 5841 | Application Rack Assy         | 3- 12              |
| G690 7000 | HDD - MK1016GAP               | 3- 27              |

| Part No.  | Description                        | Page and Index No. |
|-----------|------------------------------------|--------------------|
| AA14 3301 | Stepped Screw - M3x4               | 3- 25              |
| AX64 0139 | Cooling Fan - Controller           | 3- 6               |
| GA00 0027 | Decal - Inkjet Paper/Paper Caution | 5- 14              |
| GA00 1003 | Decal - Grip B1                    | 5- 3               |
| GA00 1004 | Decal - Grip B2                    | 5- 4               |
| GA00 3010 | Decal - Manual Feed                | 5- 5               |
| GA00 3011 | Decal - Paper Tray 1               | 5- 6               |
| GA00 3012 | Decal - Paper Tray 2 Left          | 5- 7               |
| GA00 3013 | Decal - Paper Tray 2 Right         | 5- 8               |
| GA00 3014 | Decal - Paper Tray                 | 5- 9               |
| GA00 3016 | Decal - Y Toner Supply             | 5- 10              |
| GA00 3017 | Decal - M Toner Supply             | 5- 10              |
| GA00 3018 | Decal - C Toner Supply             | 5- 10              |
| GA00 3019 | Decal - K Toner Supply             | 5- 10              |
| GA00 3025 | Decal - Drum Stay                  | 5- 11              |
| GA00 3029 | Decal - Vertical Transport         | 5- 12              |
| GA00 3030 | Decal - Shielding Plate Y          | 5- 1               |
| GA00 3031 | Decal - Shielding Plate M          | 5- 1               |
| GA00 3032 | Decal - Shielding Plate C          | 5- 1               |
| GA00 3033 | Decal - Shielding Plate K          | 5- 1               |
| GA00 3035 | Energy Decal                       | 5- 13              |
| GA00 3037 | Decal - Power Source               | 5- 15              |
| GA00 3047 | Decal - Fiery                      | 5- 16              |

| Part No.   | Description                      | Page and Index No. |
|------------|----------------------------------|--------------------|
| 0352 5060B | Screw:m2.5x6                     | 3-108              |
| 0353 0040B | Screw - M3X4                     | 3-101              |
| 0451 3006B | Tapping Screw - M3x6             | 3-103              |
| 0451 3020B | Tapping Screw - 3x20             | 3-109              |
| 0801 0149  | Philips Pan Head Screw - M4x6    | 3-111              |
| 0802 5276  | Tapping Screw With Washer - M3x6 | 3-102              |
| 1105 0367  | Spacer                           | 3-104              |
| 1105 0487  | Harness Clamp                    | 3-107              |
| 1105 0488  | Harness Clamp                    | 3-112              |
| 1105 0489  | Harness Clamp - LWS 1316         | 3-105              |
| 1105 0490  | Harness Clamp - IWS-2218         | 3-106              |
| 1105 0511  | Harness Clamp - LWS-0306ZC       | 3-110              |
| 1206 0085  | Lithium Cell - CR2032            | 3-113              |
| 1407 5751  | IC - NVRAM I2C BUS 64K DIP       | 3-114              |